



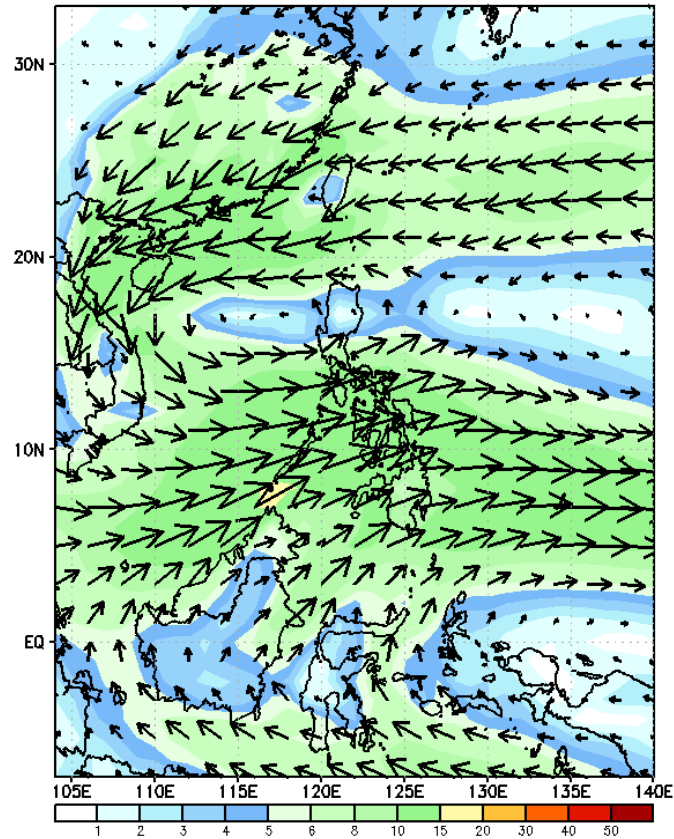
Week 1 & Week 2 Forecast for the Philippines using GEFS Model



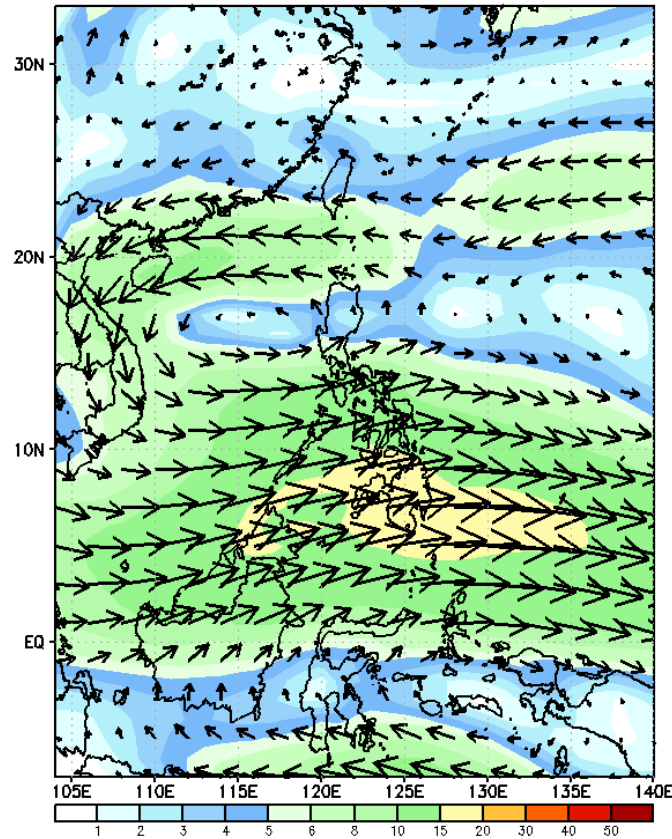
GEFS Week-1 Wind Forecasts:

Week 1: Oct 23-29, 2024

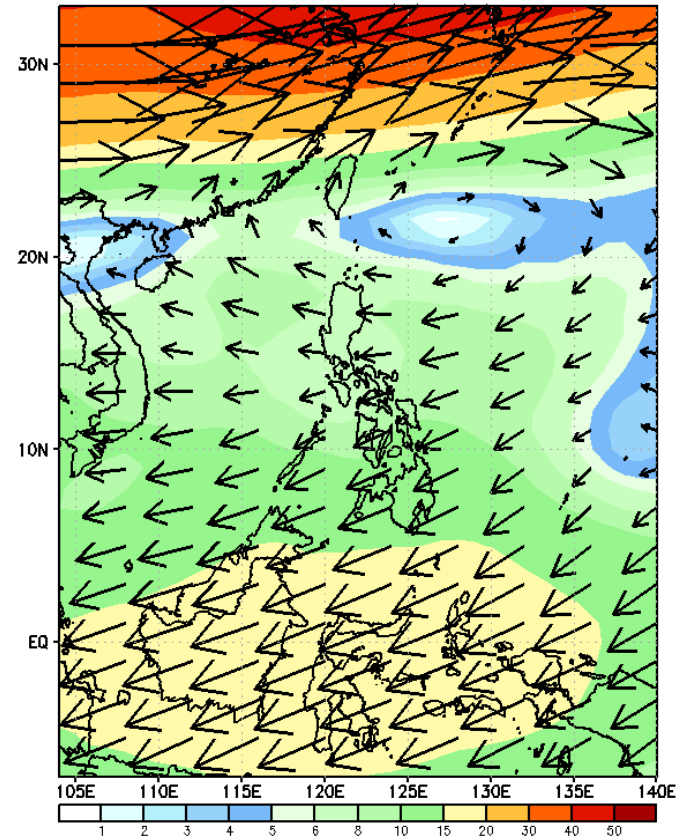
GEFS Week-1 850-hPa Wind Total
Valid: 20241023 - 20241029



GEFS Week-1 700-hPa Wind Total
Valid: 20241023 - 20241029

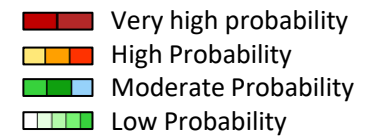


GEFS Week-1 200-hPa Wind Total
Valid: 20241023 - 20241029



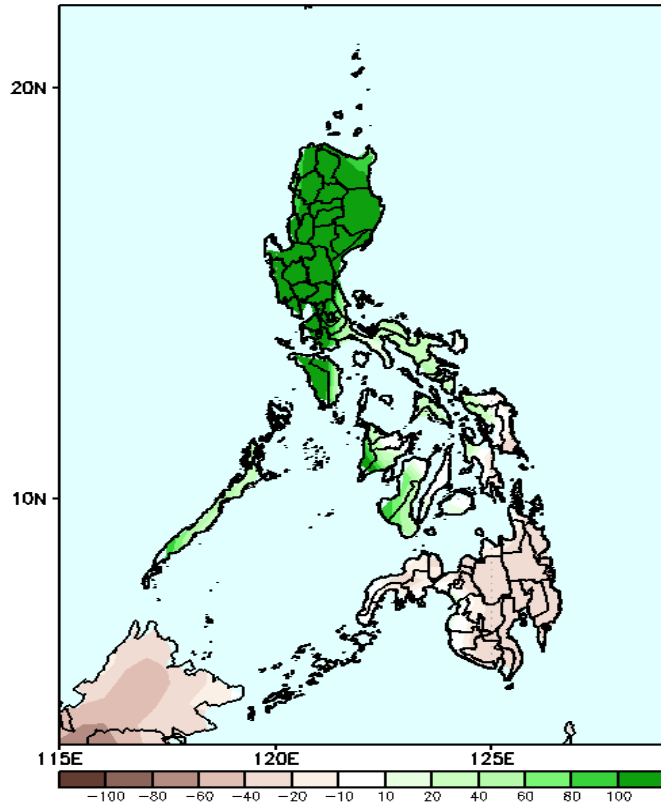
Easterlies affecting most parts of the country.

Precipitation Anomaly and Exceedance Probability > 25/50 mm

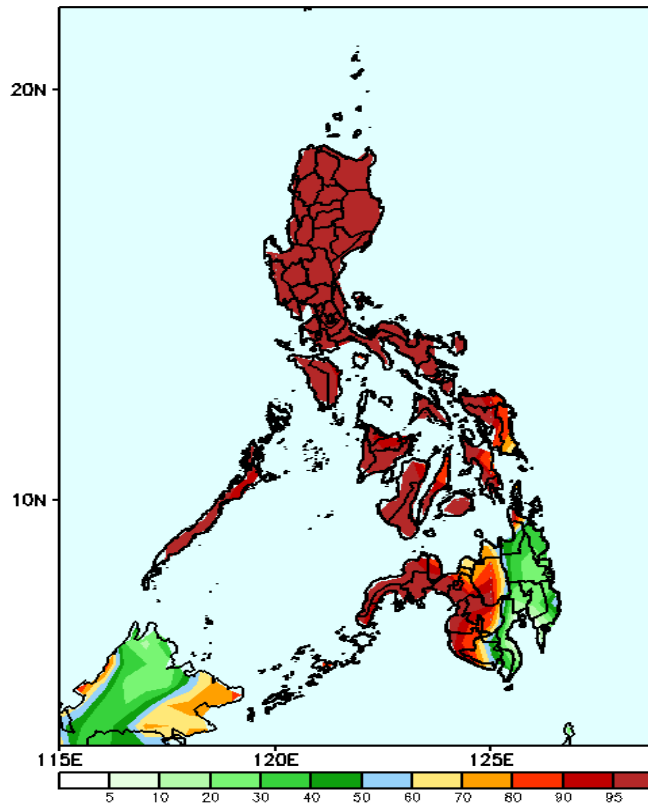


Week 1: Oct 23-29, 2024

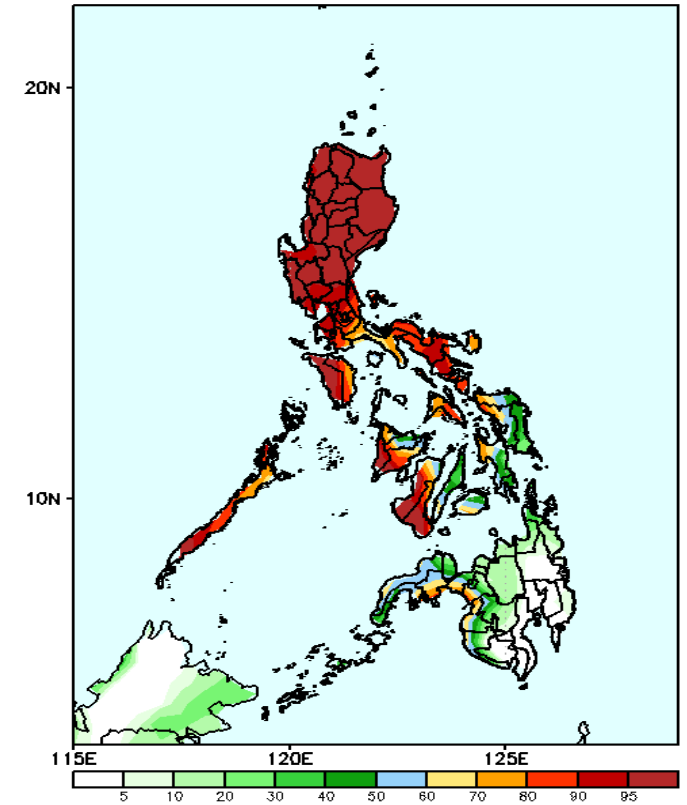
GEFS Week-1 Precip Anomaly
Valid: 20241023 - 20241029



GEFS Week-1 Exceedance Prob. > 25mm
Valid: 20241023 - 20241029



GEFS Week-1 Exceedance Prob. > 50mm
Valid: 20241023 - 20241029



Increase of Rainfall of more than 100mm is likely in most parts of Luzon; 20-60mm over Visayas, while Rainfall deficit of 20-50mm rainfall is expected for Mindanao.

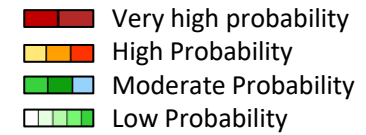
Probability to Exceed 25mm

- High to very high over most parts of Luzon, Visayas, Western and Central Mindanao and Misamis Oriental;
- Moderate to high over the rest of Mindanao.

Probability to Exceed 50mm

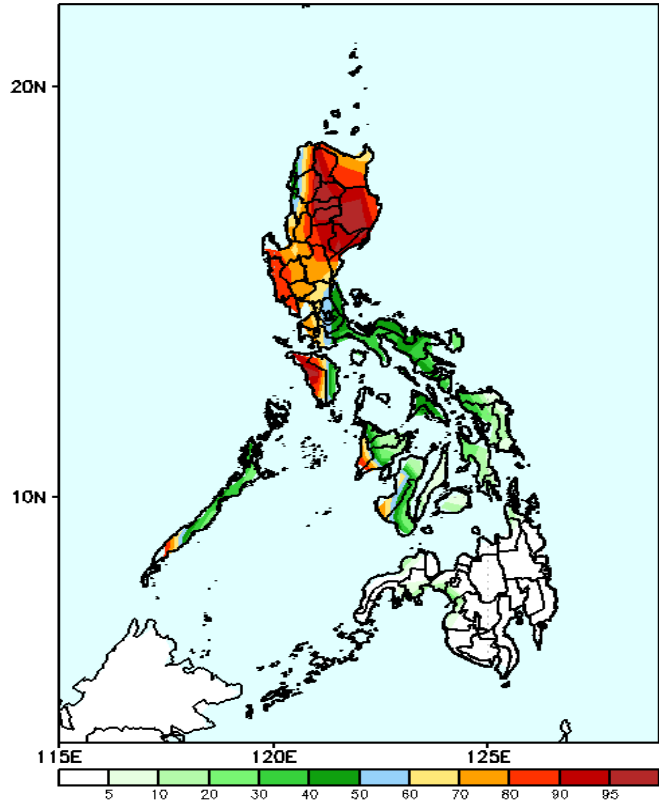
- High to very high over Luzon, Antique and western section of NIR;
- Moderate to high over most of Visayas Zamboanga Peninsula and the western section of Western Mindanao;
- Low over the rest of Mindanao.

Exceedance Probability > 100/150/200 mm



Week 1: Oct 23-29, 2024

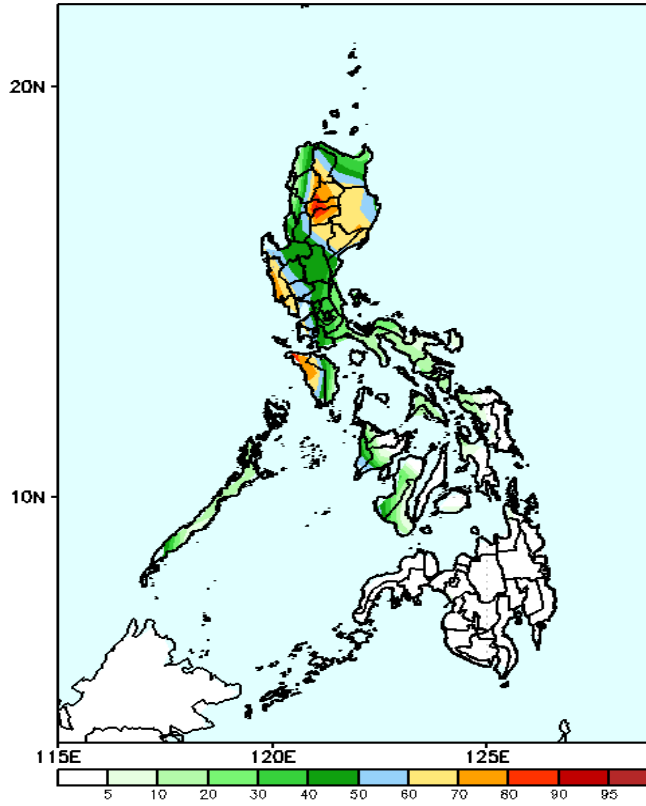
GEFS Week-1 Exceedance Prob. > 100mm
Valid: 20241023 - 20241029



Probability to Exceed 100mm

- High to very high over most of Northern and Central Luzon, and Occ. Mindoro
- Moderate to high over Ilocos Region, NCR, Rizal, Cavite, Batangas, Or. Mindoro, southern part of Palawan, Antique, western part of Iloilo and Negros Occidental;
- Low to moderate over the rest of Visayas and Mindanao;

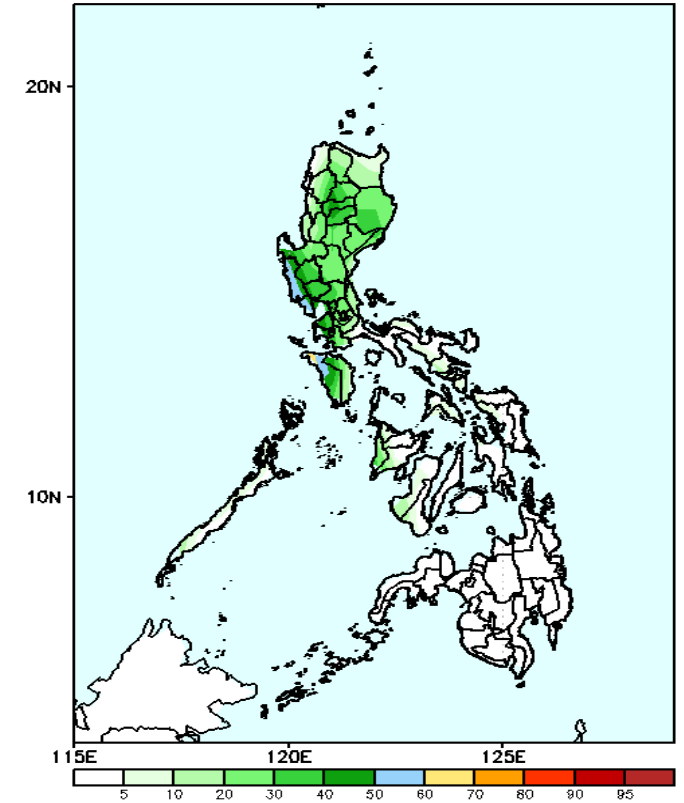
GEFS Week-1 Exceedance Prob. > 150mm
Valid: 20241023 - 20241029



Probability to Exceed 150mm

- Moderate to high over most of Northern and Central Luzon, NCR, Rizal, Cavite, Batangas and Occidental Mindoro;
- Low over the rest of the country.

GEFS Week-1 Exceedance Prob. > 200mm
Valid: 20241023 - 20241029



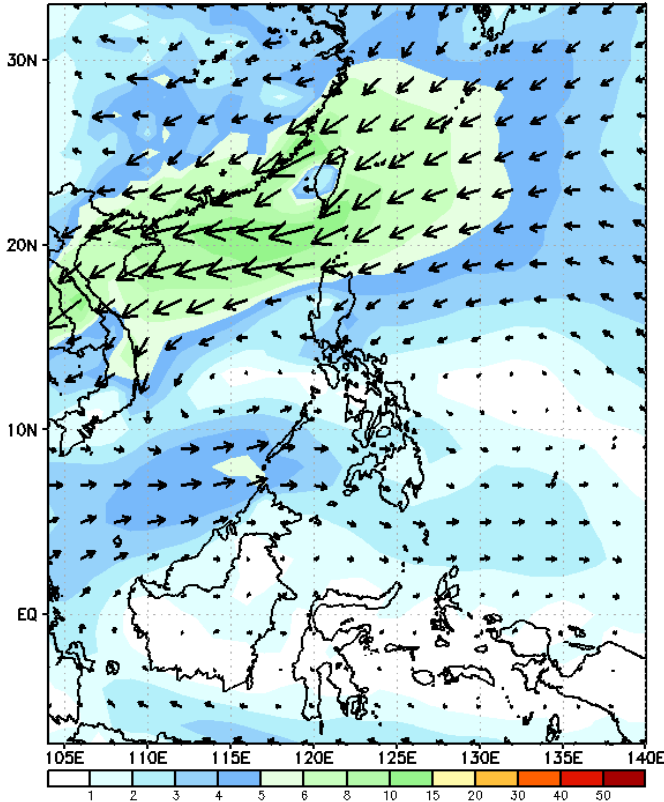
Probability to Exceed 200mm

- Moderate to high over the northern part of Batangas and Occidental Mindoro;
- Low to moderate over the rest of Northern and Central Luzon;
- Low over the rest of the country.

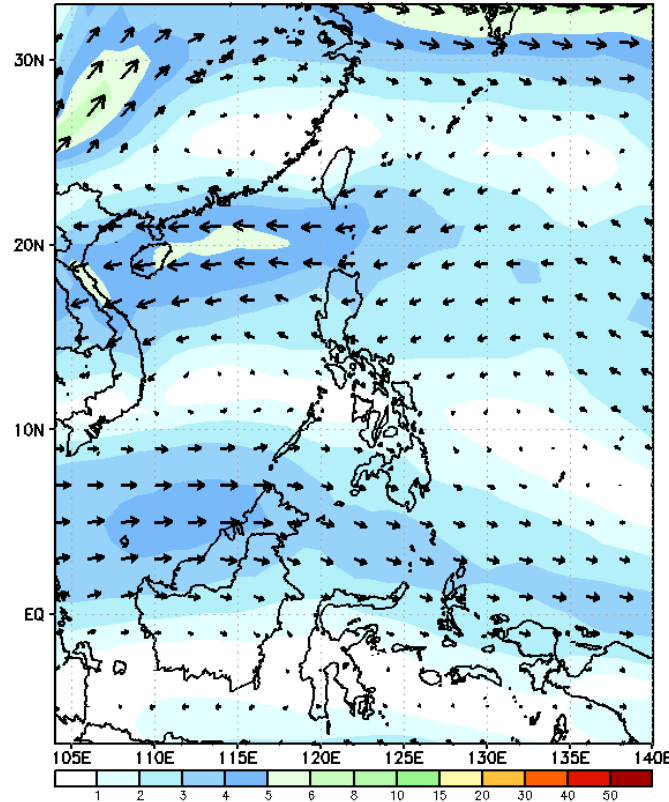
GEFS Week-2 Wind Forecasts:

Week 2: Oct 30 - Nov 05, 2024

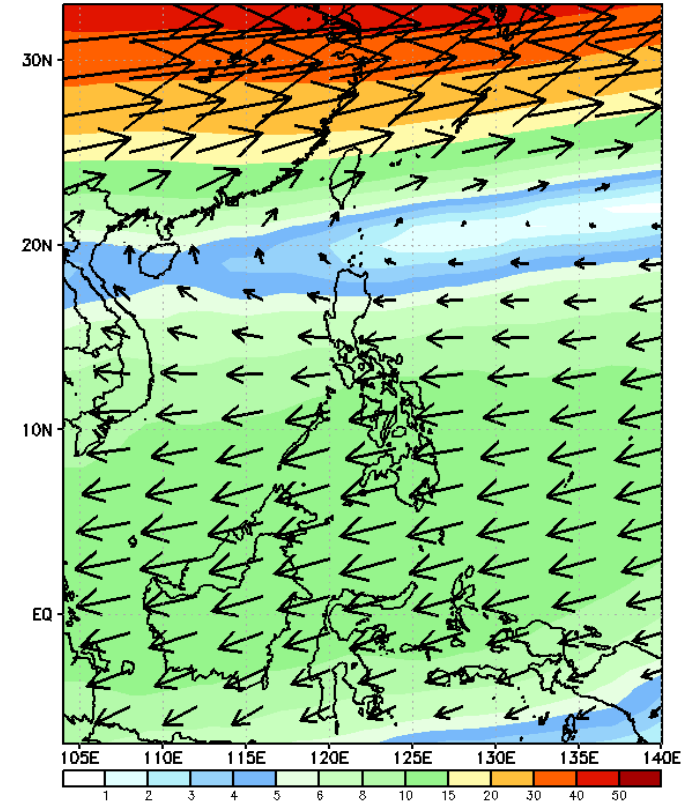
GEFS Week-2 850-hPa Wind Total
Valid: 20241030 - 20241105



GEFS Week-2 700-hPa Wind Total
Valid: 20241030 - 20241105

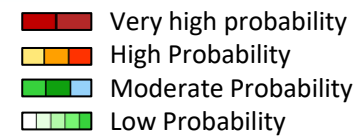


GEFS Week-2 200-hPa Wind Total
Valid: 20241030 - 20241105



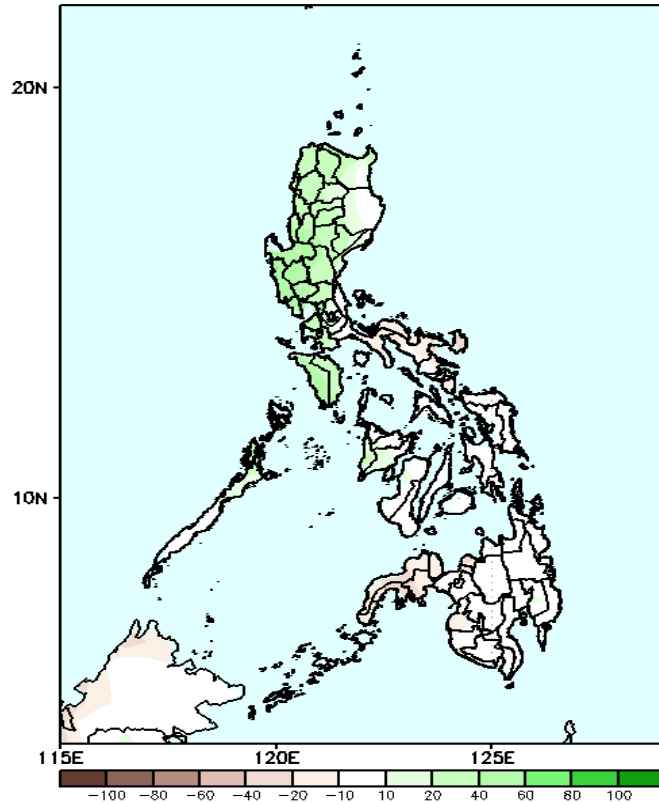
Northeasterly windflow is forecasted to affect Extreme Northern. Easterlies will likely affect the rest of the country.

Precipitation Anomaly and Exceedance Probability > 25/50 mm



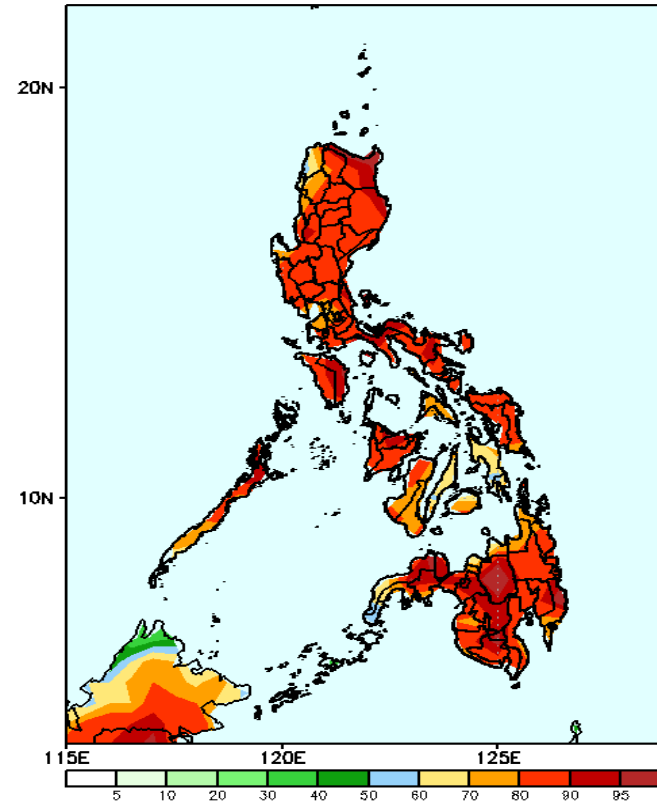
Week 2: Oct 30 - Nov 05, 2024

GEFS Week-2 Precip Anomaly
Valid: 20241030 - 20241105



Increase of rainfall of 40-60mm is likely in most parts of Luzon.

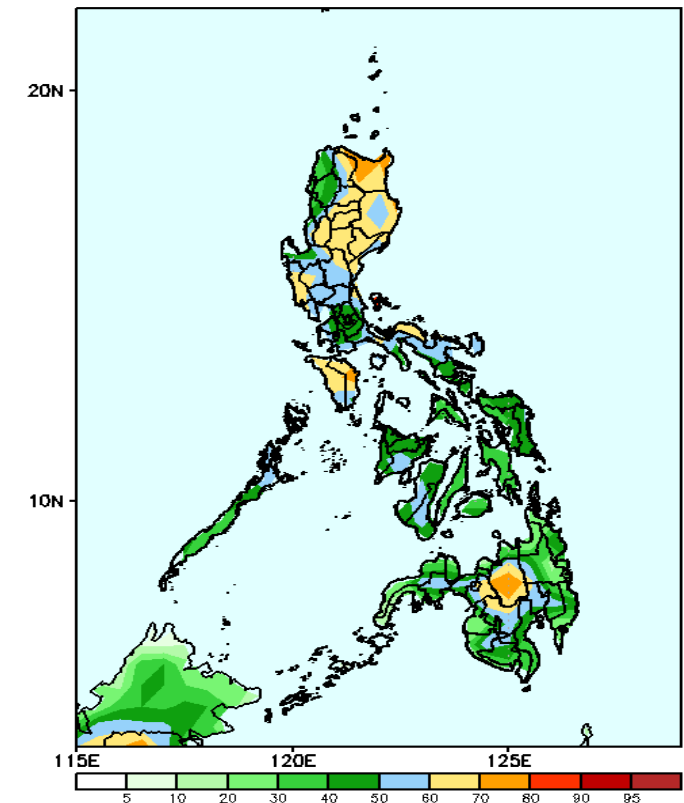
GEFS Week-2 Exceedance Prob. > 25mm
Valid: 20241030 - 20241105



Probability to Exceed 25mm

- High to very high over most parts of the country

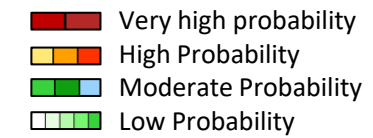
GEFS Week-2 Exceedance Prob. > 50mm
Valid: 20241030 - 20241105



Probability to Exceed 50mm

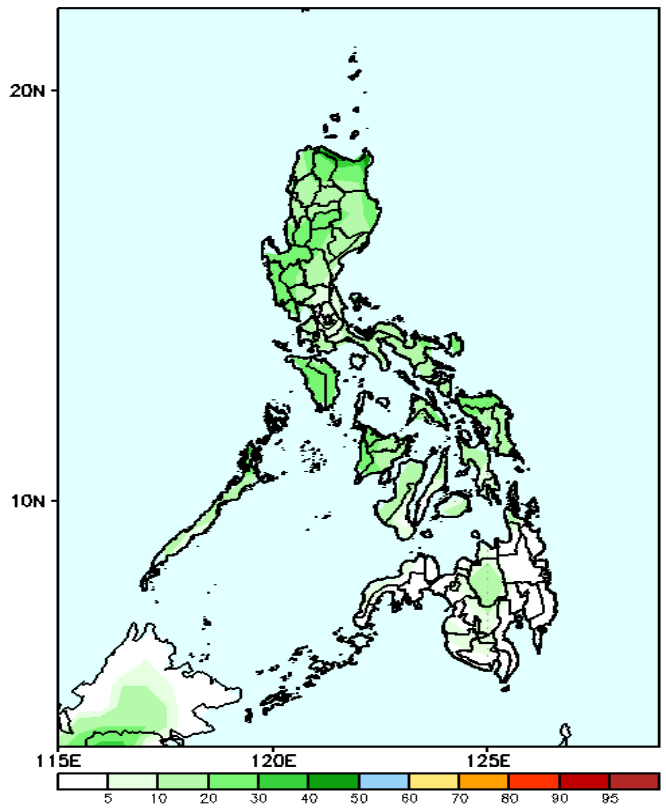
- Moderate to high over most parts of Luzon and Central Mindanao;
- Low to moderate over the rest of the country.

Exceedance Probability > 100/150/200 mm



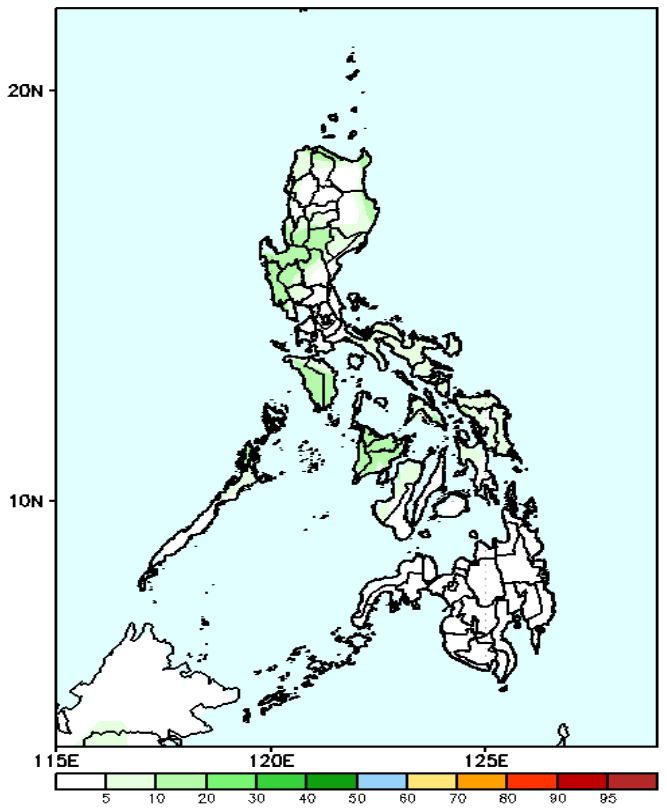
Week 2: Oct 30 - Nov 05, 2024

GEFS Week-2 Exceedance Prob. > 100mm
Valid: 20241030 - 20241105



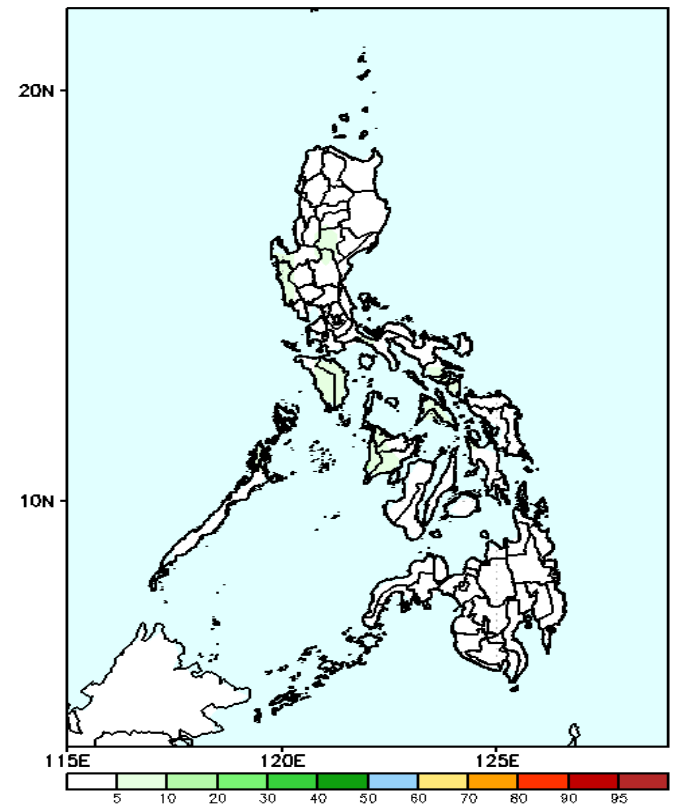
Probability to Exceed 100mm
• Low across the country.

GEFS Week-2 Exceedance Prob. > 150mm
Valid: 20241030 - 20241105



Probability to Exceed 150mm
• Low across the country.

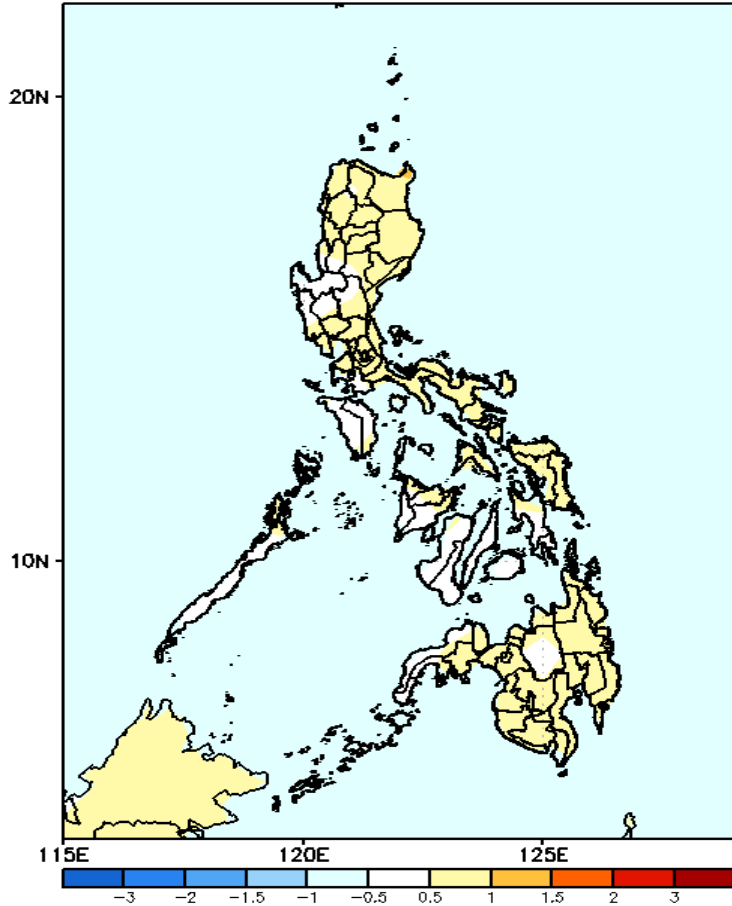
GEFS Week-2 Exceedance Prob. > 200mm
Valid: 20241030 - 20241105



Probability to Exceed 200mm
• Low across the country.

GEFS Week-1 & 2 Forecasts: T2m Anomaly

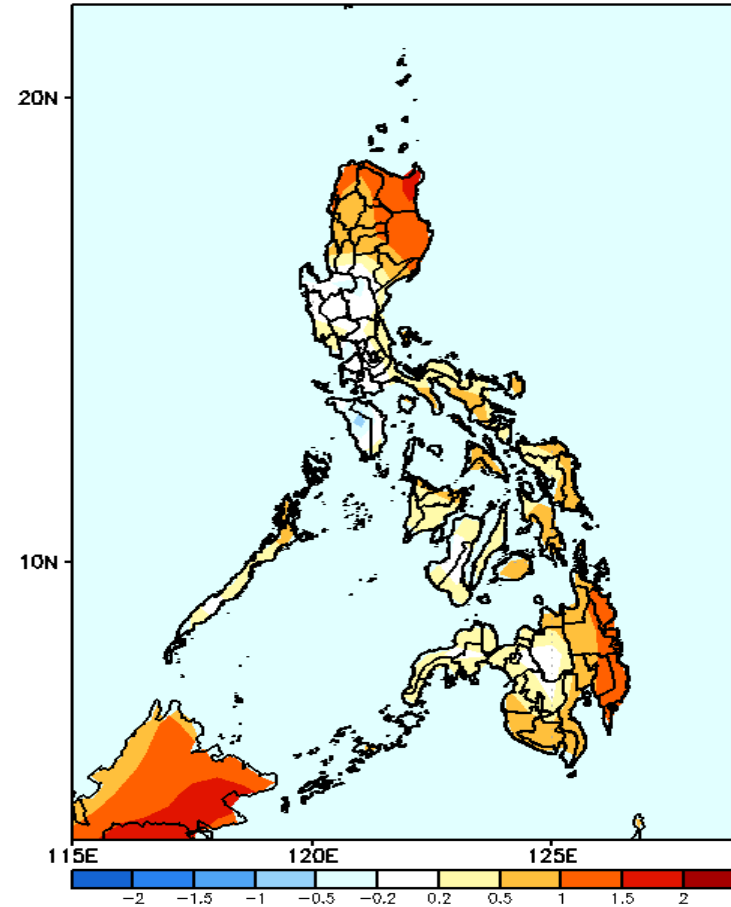
GEFS Week-2 T2m Anomaly
Valid: 20241030 - 20241105



2m Temperature Week 1: Oct 23-29, 2024

Near to slightly warmer than average surface air temperature will likely be experienced in most parts of the country.

GEFS Week-1 T2m Anomaly
Valid: 20241023 - 20241029



2m Temperature Week 2: Oct 30 - Nov 05, 2024

Slightly warmer to warmer than average surface air temperature will likely be experienced in most parts of the country except in Pangasinan, Tarlac, Pampanga, Nueva , Bulacan and Mindoro Provinces were near to slightly cooler than average surface air temperature is forecasted.